

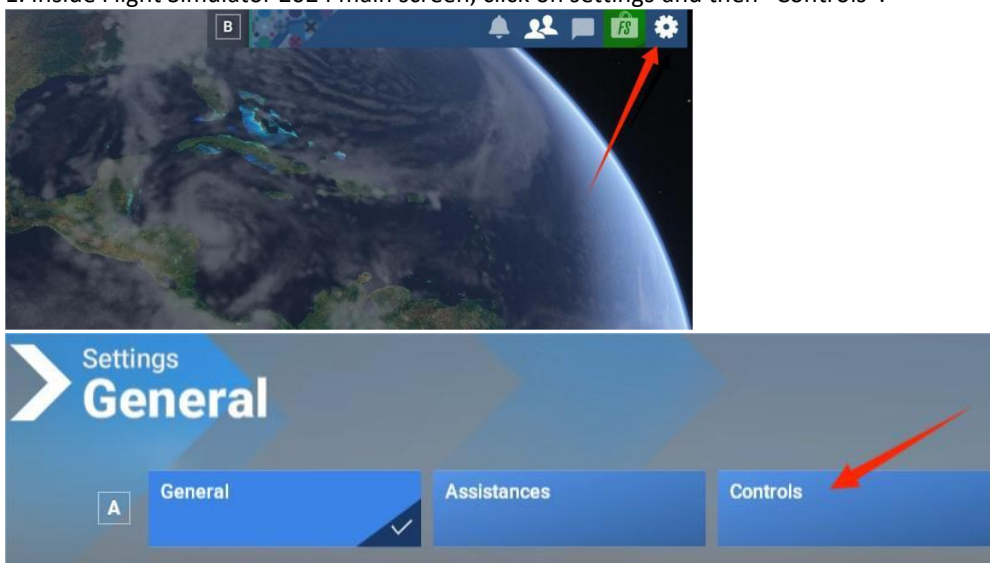
How to correct inverted axes on Microsoft Flight Simulator 2024

For this tutorial, please do not hesitate to use a computer mouse on your Xbox to navigate through settings

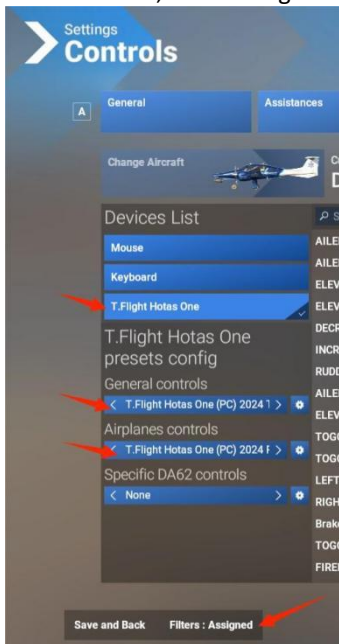
By default, in Microsoft Flight Simulator 2024 the elevator control (pitch) and throttle axes of the aircraft are incorrectly configured on the T.Flight Hotas One default profile. They are inverted, meaning that when pulling back the throttle lever it will accelerate the aircraft engine, and when you push the joystick, it will command the airplane pitch up, and vice-versa, which are not the correct airplane controls.

The guide below will instruct you on how to correct these controls in a few seconds.

1. Inside Flight Simulator 2024 main screen, click on settings and then "Controls":



2. On left side, select T.flight Hotas One, its default profiles as shown bellow and filter as Assigned:

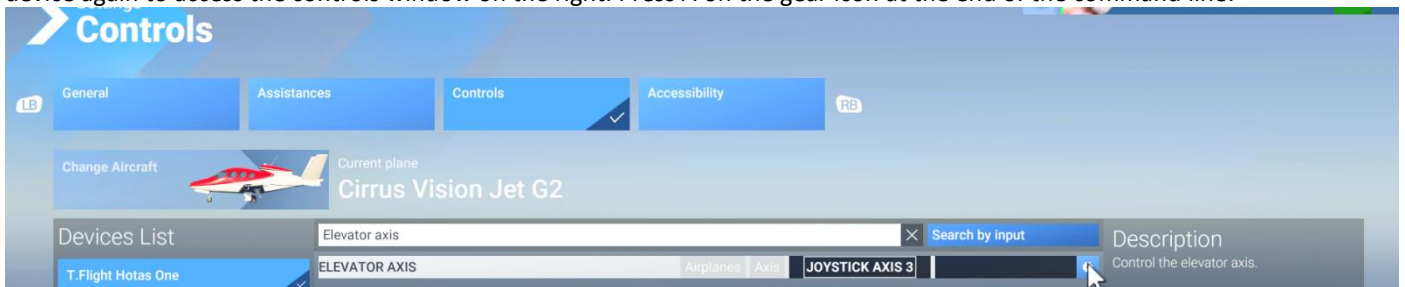


Now we will find the pitch and throttle controls which we want to correct.

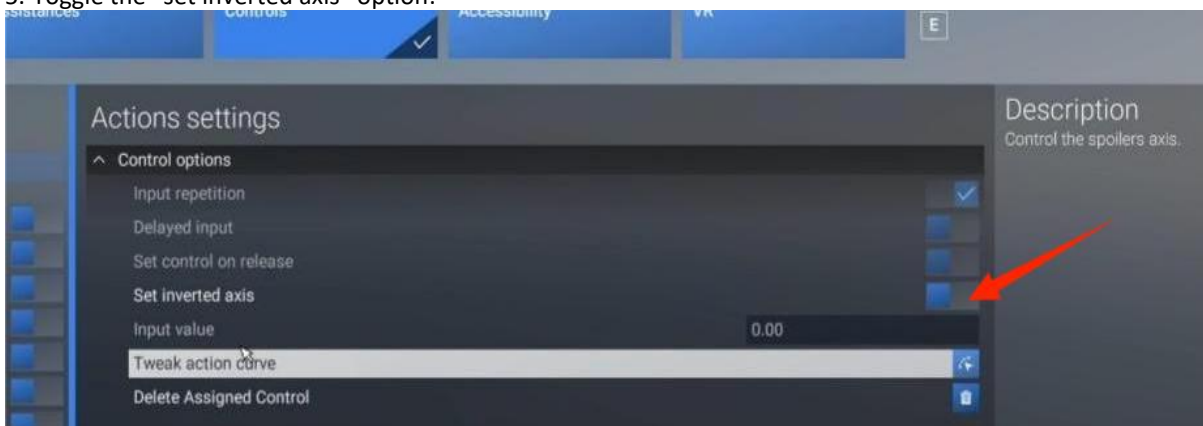
3. Using the search field below the aircraft name, locate the “ELEVATOR AXIS” control by typing its name.



4. After locating the desired function, press the B button on your gamepad to navigate in the left column, and then select your device again to access the controls window on the right. Press A on the gear icon at the end of the command line:

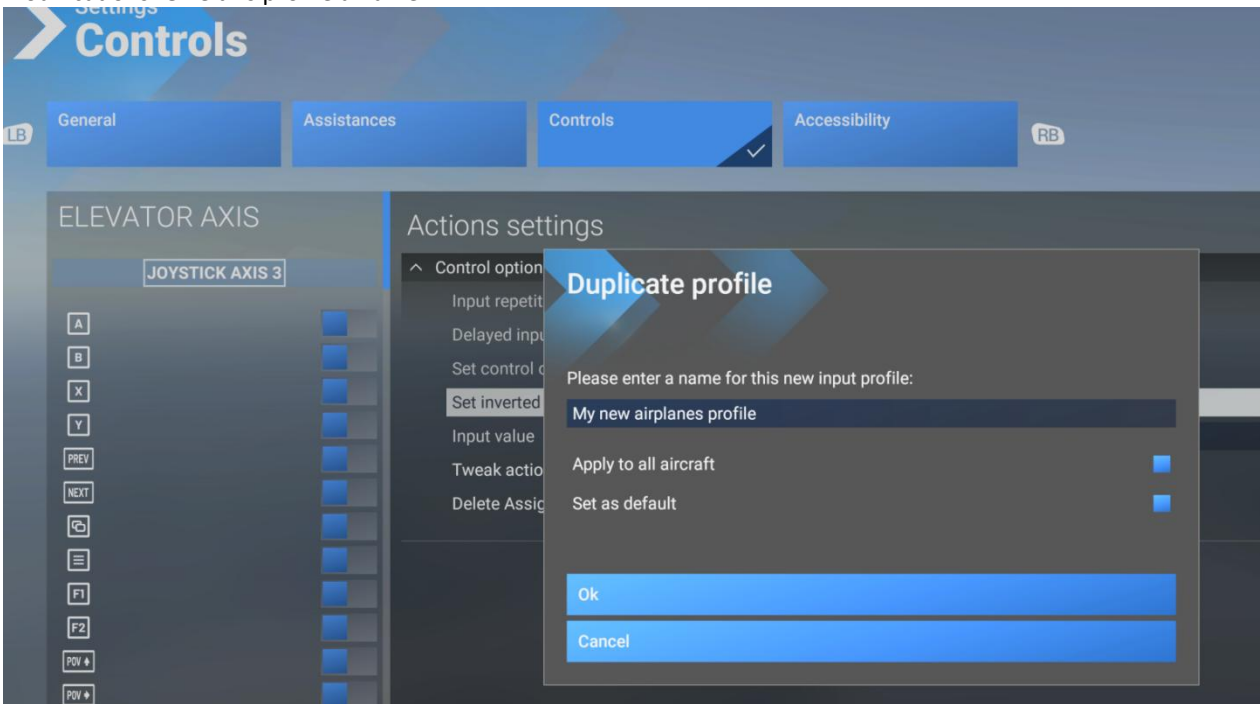


5. Toggle the “set inverted axis” option:

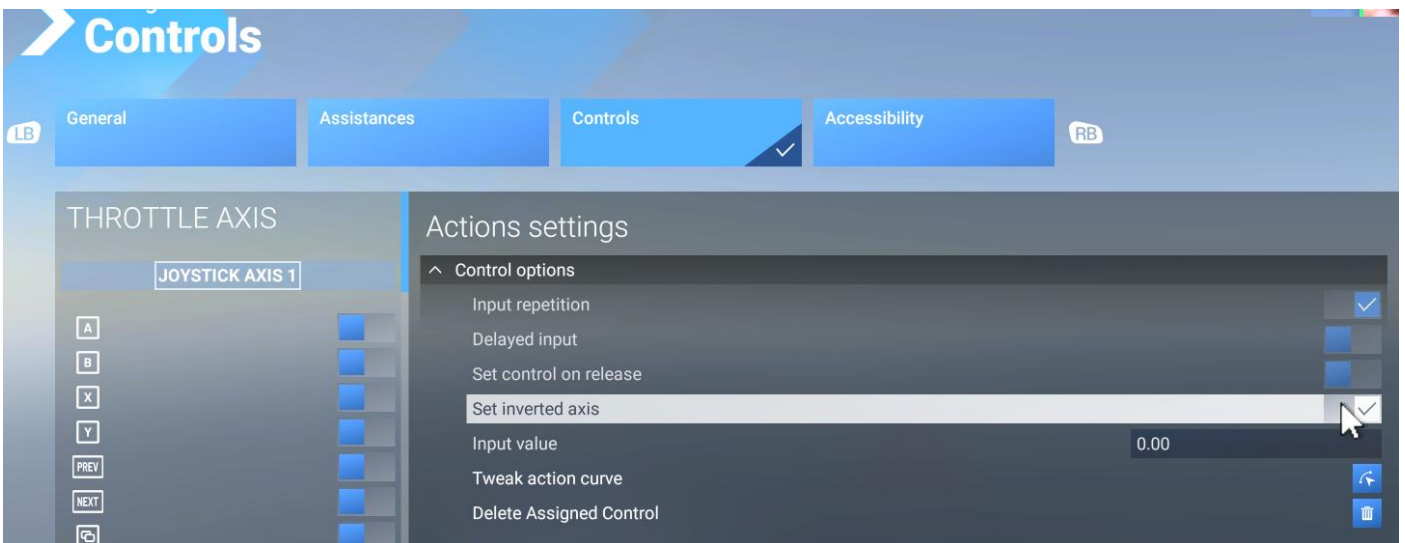
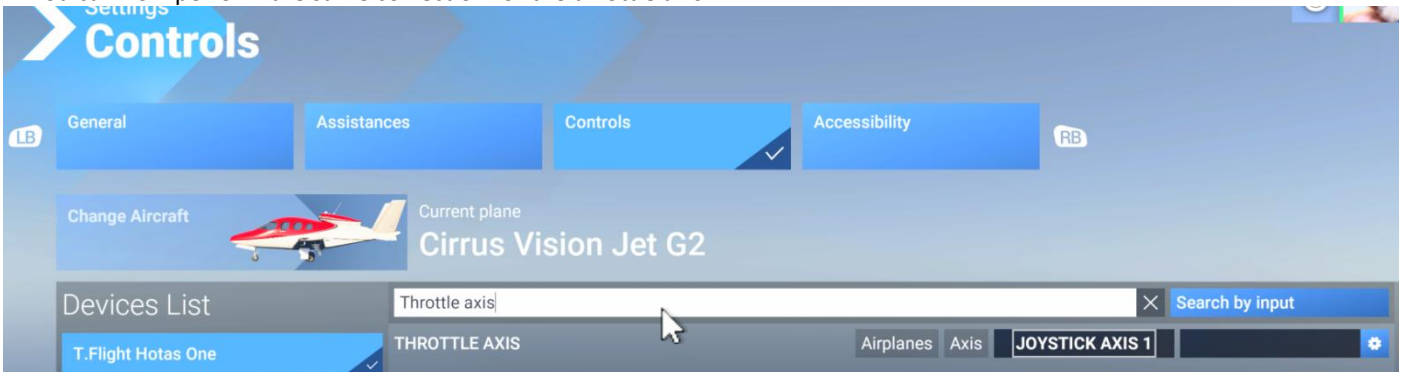


THRUSTMASTER®

6. If this is the first modification you made on the device, a new profile will be created copying the original and applying your modifications. Give this profile a name:

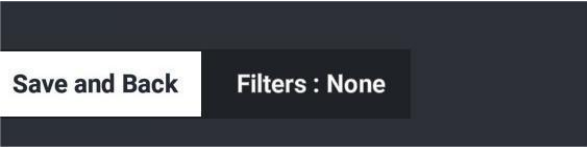


7. You can now perform the same correction for the throttle axis:



THRUSTMASTER®

8. Once both inverted controls are now checked as “inverted”, you can now click on “go back” and “Save and Back”:



For additional instructions regarding Microsoft Flight Simulator 2024 control setup, we recommend that you contact Microsoft support or check the community's suggestions on the MSFS forums.

Have nice flights!